

RESEARCH ARTICLE

Open Access

High variance in reproductive success generates a false signature of a genetic bottleneck in populations of constant size: a simulation study

Sean M Hoban^{1,2}, Massimo Mezzavilla³, Oscar E Gaggiotti⁴, Andrea Benazzo¹, Cock van Oosterhout⁵ and Giorgio Bertorelle^{1*}

Abstract

Background: Demographic bottlenecks can severely reduce the genetic variation of a population or a species. Establishing whether low genetic variation is caused by a bottleneck or a constantly low effective number of individuals is important to understand a species' ecology and evolution, and it has implications for conservation management. Recent studies have evaluated the power of several statistical methods developed to identify bottlenecks. However, the false positive rate, i.e. the rate with which a bottleneck signal is misidentified in demographically stable populations, has received little attention. We analyse this type of error (type I) in forward computer simulations of stable populations having greater than Poisson variance in reproductive success (i.e., variance in family sizes). The assumption of Poisson variance underlies bottleneck tests, yet it is commonly violated in species with high fecundity.

Results: With large variance in reproductive success ($V_k \geq 40$, corresponding to a ratio between effective and census size smaller than 0.1), tests based on allele frequencies, allelic sizes, and DNA sequence polymorphisms (heterozygosity excess, M-ratio, and Tajima's D test) tend to show erroneous signals of a bottleneck. Similarly, strong evidence of population decline is erroneously detected when ancestral and current population sizes are estimated with the model based method MSVAR.

Conclusions: Our results suggest caution when interpreting the results of bottleneck tests in species showing high variance in reproductive success. Particularly in species with high fecundity, computer simulations are recommended to confirm the occurrence of a population bottleneck.

Keywords: Conservation, Heterozygosity excess, M-ratio, MSVAR, FPR, Sweepstakes reproduction, Type I error, Variance in reproductive success

Background

Demographic fluctuations, including changes in population size and growth rate, are common events in natural populations. Severe population size declines (bottlenecks), however, may have detrimental consequences including increased inbreeding, decreased adaptive potential, increased disease susceptibility, lowered fecundity, and disruption in expression of quantitative traits [1-3]. As bottlenecks often affect long-term fitness and population viability, or change

the balance of drift and selection, they are key events in a species' evolutionary history, and a principal concern for endangered species [4].

Bottlenecks may leave a population genetic signature, such as decreases in number of alleles and heterozygosity, and loss of rare alleles [5,6]. These signatures can be easily detected when temporal samples are available (e.g. museum specimens or fossil remains), so that contemporary genetic variation can be compared to historic levels. A bottleneck, however, may also leave specific signatures in current genetic variation, distinct from those in populations having a history of small and constant size. Indeed, several methods for detecting genetic bottlenecks in the

* Correspondence: ggb@unife.it

¹Department of Life Sciences and Biotechnology, University of Ferrara, via Borsari 46, Ferrara I-44121, Italy

Full list of author information is available at the end of the article

absence of information about historical sizes and in absence of pre-bottleneck genetic samples exist [7-10]. Genetic methods for bottleneck detection are useful because: (1) historical (and current) census sizes are rarely known; (2) even when census size (N_c) is known, cryptic bottlenecks (change in effective size, N_e , without change in N_c) may occur; and (3) bottleneck outcomes are highly stochastic, meaning that genetic diversity following the bottleneck is somewhat unpredictable even when the demographic history is known [11,12]. It is therefore important to evaluate the statistical performance of these methods, especially as these tests are key components of many evolutionary, molecular ecology, and conservation genetic studies [13-16].

Previous investigations have demonstrated that the statistical power of these tests is highest when the bottleneck is severe or prolonged, and when many loci are used. In addition, factors such as the mutation model and the rate of post-bottleneck recovery may also play an important role [9,13,16-18]. Also, the methods do not always show similar power. For example, the heterozygosity excess test [9] has low power after rapid recovery [17] whereas the M-ratio test [10] remains effective, and the heterozygosity-excess test is weak unless the population is reduced to some tens of individuals [19]. Bottleneck signals are also weakened if the bottleneck occurred gradually, or if the population recovered to its pre-bottleneck population size [16]. Numerous empirical studies have failed to detect a genetic signal even when a moderate or strong demographic bottleneck is known to have occurred [4,11,20], showing empirically that the power of such tests can be limited.

A lack of statistical power in bottleneck tests may result in an underestimation of the extinction risk. On the other hand, identifying bottleneck signatures when they have not occurred may represent a complementary risk [18,21], yet this remains an often overlooked aspect of studies employing these methods. Controlling type I error rate (FPR, False Positive Rate) is important, particularly given that resources towards conservation tend to be limited [22]. Type I error could result in incorrect population protection status or unwarranted, ineffective, or even detrimental in-situ management interventions (e.g., translocations, augmentations). Therefore, an understanding of type I error in realistic situations is essential to properly use and interpret results from these methods.

Investigations of type I error of bottleneck detection methods are few, and have mostly concerned mutation models in microsatellite markers. For example, the probability of type I error can be substantial or extreme (from 40 to 100%) when the wrong mutation model is assumed or when multi-step mutations occur [21]. Also, assuming the wrong population-mutation parameter theta ($\theta = 4N_e\mu$, where μ is the mutation rate) in the M-ratio test may result in either type I or type II errors, depending on whether the assumed θ is larger or smaller than the actual value [23].

Remarkably, in spite of frequent use of bottleneck tests, and the conservation decisions that are based on them, little is known about their type I error rates when assumptions of the biological model are violated. For example, the influence of mating patterns [13], age structure [14], and reproductive success [21,22] is rarely known.

Here we focus on type I error rates that may arise in bottleneck tests when the variance of reproductive success (hereafter V_k) is larger than the Poisson variance assumed by simple models underlying the bottleneck detection methods. Larger than Poisson V_k could cause strong intergenerational genetic drift, because it introduces additional stochasticity (e.g. unaccounted loss of alleles) when only few parents contribute to the next generation [24]. When extreme, this process has been referred to as Sweepstakes Reproductive Success (SRS), in which many individuals "lose" and produce zero or very few offspring, while one or a few individuals "win" and produce many offspring [25,26]. Such extreme reproductive variance can be caused by complete or near-complete dominance of one pair, or positively correlated sibling survival, in which all offspring of a particular brood survive or perish [24,25]. Variance can also be extreme when only one male contributes offspring [12]. Large V_k reduces the N_e/N_c ratio, which may explain N_e/N_c in the order of 10^{-2} - 10^{-3} observed in many amphibians, fish, marine invertebrates, and plants. Even more extreme N_e/N_c ratios, as low as 10^{-3} to 10^{-5} , have been reported for lobster, cod, red drum, and oyster [27]. "Chaotic" genetic differences at small geographic scale and at different time intervals often observed in marine organisms has been explained as relating to high V_k [26].

Theoretically, the relationship between V_k and the N_e/N_c ratio has been derived under different models [25,28,29], and hence, an increase in V_k can be converted into a predictable reduction in N_e . However, the effect of V_k on the shape of a coalescent tree and on the relationship between different genetic diversity measures (which are the basis for bottleneck testing) have not been investigated [27]. In particular, it remains to be elucidated whether analysis of genetic data from species with large V_k will show signature of small but constant size, or whether large V_k results in a false signal of a genetic bottleneck. Here we investigate this question for different combinations of N_e and V_k values, using simulated data to estimate type I errors in two tests commonly applied to microsatellite data to detect bottlenecks, the M-ratio [10] and the heterozygosity test [9], and when ancestral and current population size are estimated to infer bottlenecks with the MSVAR method [7]. We also consider the effects of V_k on the Tajima's D test [30], which is used to detect selection as well as deviations from demographic stability in DNA sequence polymorphisms. All these tests assume stable populations with Poisson-distributed family sizes, i.e. $V_k = 2$.

Methods

Genetic variation data were generated by simulating demographically stable populations with different effective size (N_e) and different variance in reproductive success (V_k). For each combination of parameters, 100 replicates were generated. Each data set, consisting of 15 microsatellite markers, was analysed with the M-ratio and the heterozygosity excess tests, and with the MSVAR method. The fraction of replicates significantly supporting a bottleneck can be considered as an estimate of the FPR (false positive rate), i.e., the type I error rate. Then a smaller set of simulations was used to analyse two additional markers (microsatellite loci with constrained allelic range and DNA sequence polymorphisms).

Generating the primary set of synthetic data

The software simuPOP [31] was used to generate the virtual data. simuPOP is an individual-based, forward-in-time simulator that uses the flexible scripting language Python to allow operators that control sex ratio, number of offspring produced etc., and is one of few simulators to allow such options [32]. Random mating of individuals and family sizes with different distributions (i.e., V_k) can be simulated straightforwardly. We analysed 16 combinations of N_e (50, 500, 2500 and 5000) and V_k (2, 40, 400, and 2000). Population size was assumed to be constant, and the mean number of offspring per mating was always equal to two. In order to obtain the same N_e for different V_k values, the census sizes required in the simulations were computed using the approximate relationship $N_e/N_c = 4/(V_k + 2)$ [25,33]. When $V_k = 2$, family sizes were Poisson distributed (as assumed by most population genetics models) and the ratio $N_e/N_c = 1$. For larger V_k , we used a modified gamma distribution of family sizes with decimal values rounded down to the nearest integer (resulting in a discrete distribution approximating a negative binomial, Figure 1). This choice allowed us to maintain the average number of offspring per mating equal to two while producing a long right tail in the distribution. The V_k values of 40, 400, and 2000 correspond approximately to N_e/N_c equal to 0.1, and 0.01, 0.002, respectively.

Fifteen neutral, independent microsatellites evolving under a strict stepwise mutation model with mutation rate $\mu = 5 \times 10^{-4}$ were considered. Mutation-drift equilibrium was obtained by running simulations for N_e generations, starting from individuals with a Dirichlet distribution of allele frequencies. After verifying that the population had reached a stable equilibrium confirmed by the convergence of the number of alleles (K), the expected heterozygosity (H_e), and the inbreeding coefficient F_{is} , 50 individuals were randomly sampled and analysed using ARLEQUIN v3.5 [34] for the summary statistics noted above, the M-ratio and the Tajima's D tests, and using BOTTLENECK v1.1.2.1

[9] for the heterozygote excess test, and MSVAR v. 1.3 for the estimation of current vs. ancestral population sizes [7].

Additional simulations

Some specific situations were investigated using additional simulations. First we simulated microsatellite markers where the maximum number of alleles is limited to five, to represent expressed (EST) microsatellites which tend to have a limited allelic range; a restricted allele range may affect the M-ratio. Second we simulated DNA sequences of 500 base pairs evolving under an infinite site mutation model with mutation rate $\mu = 10^{-7}$ per site per generation. These simulations were conducted to understand whether the spurious signal of a bottleneck produced by $V_k > 2$ is specific to microsatellites markers, or whether a similar signal would be found when Single Nucleotide Polymorphisms (SNPs) are considered.

Bottleneck tests

Microsatellite data was analysed first with the commonly used M-ratio test [10] and heterozygosity excess test [9]. The M-ratio test is based on the frequency distribution of allelic sizes, which is expected to have gaps after a bottleneck due to stochastic loss of rare alleles. The M-ratio is computed in each data set as simply the ratio of the number of occupied allelic states divided by the number of possible allelic states (e.g. the range). Evidence of deviation from the null hypothesis of demographic stability can be concluded in one of two ways: if the observed value is lower than a simple threshold criteria (M-ratio < 0.68 [10], which is widely used as a "rule of thumb" in conservation genetics) or if the observed value is lower than a critical value, determined by reconstructing the null distribution of M using 1000 coalescent simulations. The coalescent simulations used to generate this null distribution assume by definition $V_k = 2$. Also we set the parameters N_e and μ to the values used in producing the corresponding data sets. Throughout the paper, we will call M-ratio_{ft} test the approach based on the fixed threshold, and M-ratio_{sim} test the approach that uses simulations to compute the critical value. The heterozygosity excess test is based on a relationship between heterozygosity and number of alleles, which is predicted to deviate from theoretical expectations after a bottleneck because the former decreases more slowly than the latter. Statistical significance for this test is computed using the Wilcoxon's signed rank test to compare the expected heterozygosity calculated from the data (H_e) to an expected heterozygosity based on the number of alleles present (H_a) [9], where H_a is computed by simulation using the program BOTTLENECK [35].

We performed also a more sophisticated analysis which is frequently used to detect changes in population size [7]. This analysis uses a full-likelihood model-based approach

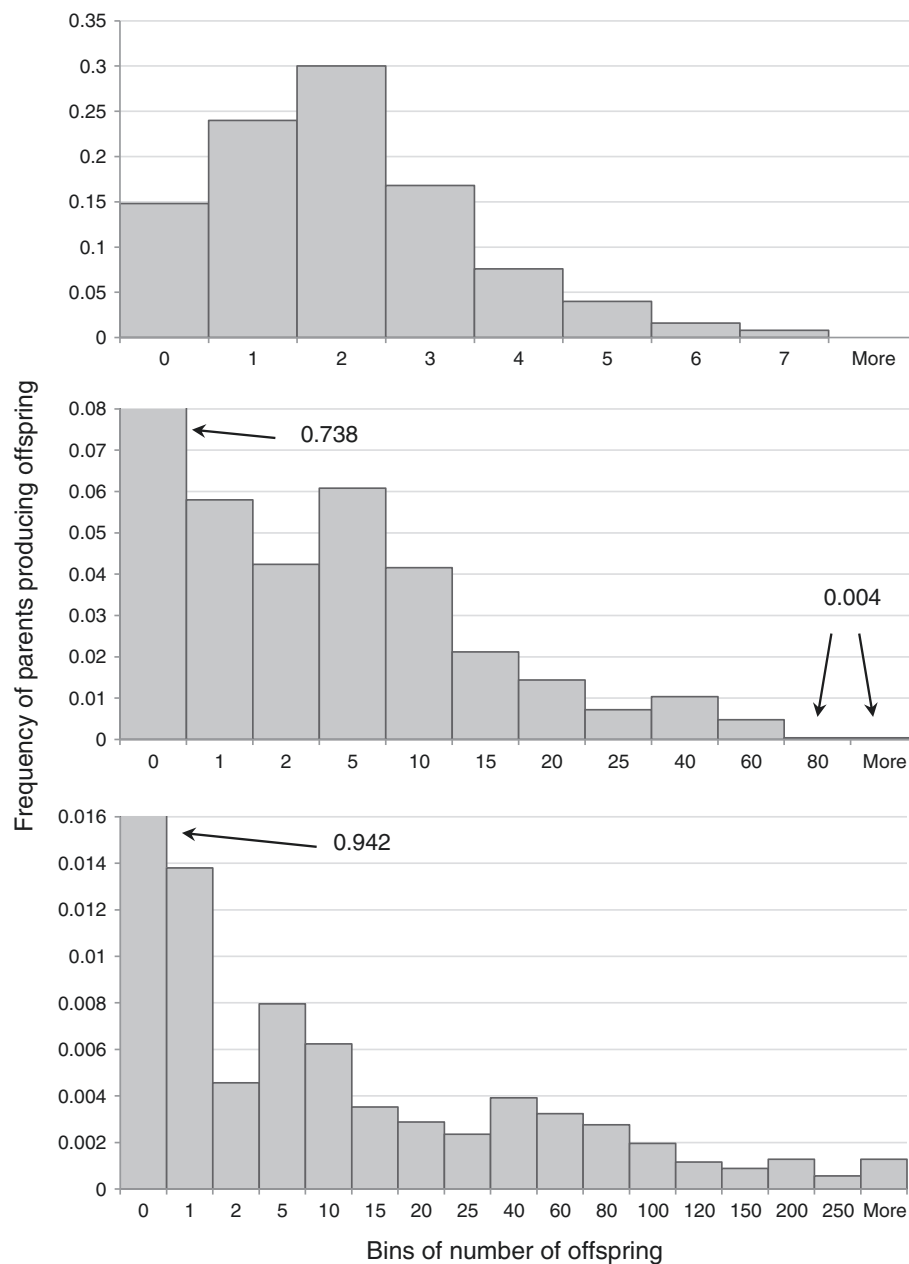


Figure 1 An example of the distribution of offspring per parent in the simulations. The three panels correspond to the distributions obtained in simulations with $V_k = 2$ (top), $V_k = 40$ (middle), and $V_k = 400$ (bottom).

called MSVAR to infer current and past population sizes as well as other parameters. The method can be used to infer a bottleneck if the ratio of past to current population size is significantly greater than unity. From each MSVAR analysis, the posterior distribution of the ratio between ancient and current population sizes was estimated, and the data set was considered to support the bottleneck hypothesis if less than 5% of this distribution was smaller than 1. For each data set (1600 in total), we recorded the MCMC (Monte Carlo Markov Chain) output 40,000 times every

10,000 steps. The first 10% of steps were discarded as burn in. Means and variances for priors and hyperpriors are reported in the legend of Table 1. In some cases this approach has been shown to be more powerful than the simpler statistics explained above [11], but it also relies on more assumptions (a particular demographic model).

DNA sequences were analysed with the Tajima's D test [30], which is based on the comparison between the average pairwise difference (π) and the number of polymorphic sites (S). If equilibrium is not reached after a demographic

Table 1 Simulation results for a population with constant size and standard microsatellite mutations

N_e	V_k	N_e/N_c	H_e (SD)	K (SD)	F_{is} (SD)	M-ratio (SD)	%P	FPR			
								M-ratio _{ft}	M-ratio _{sim}	Het excess	MSVAR
50											
	2	1	0.11 (0.17)	1.53 (0.59)	0.00 (0.09)	1.00 (0.03)	48	0.01	0.02	0.01	0.00
	40	0.1	0.07 (0.14)	1.30 (0.52)	-0.03 (0.12)	1.00 (0.00)	27	0.0	0.04	0.02	0.00
	400	0.01	0.05 (0.14)	1.24 (0.45)	-0.01 (0.11)	1.00 (0.03)	23	0.01	0.04	0.10	0.00
	2000	0.002	0.07 (0.13)	1.25 (0.35)	-0.15 (0.17)	0.97 (0.06)	25	0.00	0.17	0.11	0.00
500											
	2	1	0.44 (0.16)	3.08 (0.72)	-0.02 (0.12)	1.00 (0.03)	100	0.0	0.09	0.04	0.00
	40	0.1	0.42 (0.20)	2.74 (0.81)	-0.07 (0.21)	0.98 (0.07)	96	0.03	0.36	0.32	0.62
	400	0.01	0.43 (0.23)	2.91 (1.10)	-0.17 (0.29)	0.87 (0.18)	89	0.21	1.00	0.53	0.97
	2000	0.002	0.44 (0.21)	3.17 (1.20)	-0.19 (0.31)	0.71 (0.21)	88	0.43	1.00	0.54	1.00
2500											
	2	1	0.71 (0.06)	6.3 (1.3)	0.01 (0.05)	0.95 (0.08)	100	0.0	0.03	0.06	0.06
	40	0.1	0.69 (0.1)	5.7 (1.8)	-0.08 (0.11)	0.89 (0.13)	100	0.07	0.51	0.20	0.66
	400	0.01	0.64 (0.09)	4.5 (1.2)	-0.19 (0.13)	0.82 (0.15)	99	0.35	1.00	0.39	0.99
	2000	0.002	0.61 (0.12)	4.2 (1.4)	-0.20 (0.12)	0.69 (0.18)	99	0.49	1.00	0.42	1.00
5000											
	2	1	0.76 (0.08)	7.70 (1.60)	-0.016 (0.08)	0.94 (0.09)	100	0.0	0.05	0.07	0.14
	40	0.1	0.72 (0.09)	6.06 (1.76)	-0.11 (0.17)	0.81 (0.19)	100	0.23	0.93	0.22	0.97
	400	0.01	0.66 (0.13)	4.80 (1.51)	-0.22 (0.16)	0.68 (0.23)	100	0.50	1.00	0.40	1.00
	2000	0.002	0.67 (0.11)	4.90 (1.66)	-0.24 (0.14)	0.66 (0.20)	99	0.58	1.00	0.43	1.00

Mean values of summary statistics (with standard deviations) across 100 replicates are given. The last four columns report the rate of false positives (FPR = type I error) estimated as the fraction of replicates with an M-ratio smaller than the commonly used threshold of 0.68 (M-ratio_{ft}), with a M-ratio smaller and the critical value computed by simulation using the same parameter $\theta = 4N_e\mu$ used to generate the data (M-ratio_{sim}), where a significant ($P < 0.05$) heterozygosity excess was detected using the program BOTTLENECK, and where a significant difference between ancestral and current population size is detected by MSVAR, respectively. N_e = effective population size; N_c = census population size; H_e = expected heterozygosity; F = inbreeding coefficient, estimated as $1 - H_o/H_e$, where H_o is the observed heterozygosity; M = M-ratio; %P = fraction of replicates producing a polymorphic locus; the starting values, in the log₁₀ scale, for the mean and variance of the prior distributions in MSVAR, are as follows: ancestral size (3,1), current size (3,1), mutation rate (-3.3,1), time since the decline (2,0.5); means and variances (and their means and variances) of the hyperprior distributions used in MSVAR are as follows: ancestral size (3,1,0,0.5), current size (3,1,0,0.5), mutation rate (-3.3,0.25,0,0.5), time since the decline (2,0.5,0,0.5).

event, negative D values are expected under population expansion and positive D values are expected under population decline [30]. Tajima's D is commonly used also to detect deviation from neutrality, i.e. the impact of selection on DNA sequences. Statistical significance is computed by simulations, as implemented in Arlequin [34].

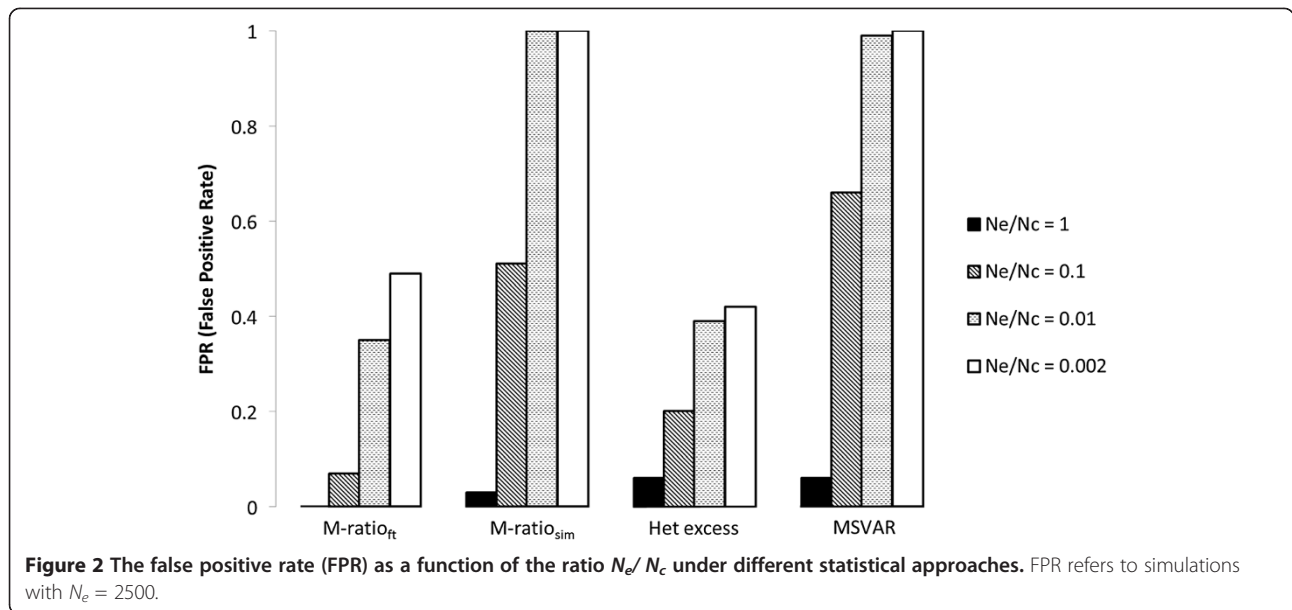
Results

Primary set of simulations

As expected, the average level of genetic variation (expected heterozygosity, H_e , and number of alleles, K) increased with increasing N_e . The average H_e observed for $V_k=2$ is similar to theoretical predictions [36] which are 0.09, 0.42 and 0.78 for N_e values 50, 500, and 5000. The number of alleles does not have a simple expectation under the single-step mutation model, but the observed values are compatible with other results [37]. When V_k increases, we observe a trend of decreased genetic variation within each set of simulations with the same N_e , and this effect is stronger for K than for H_e . For $V_k > 2$, populations

also appear to deviate from the Hardy-Weinberg equilibrium, with larger observed than expected heterozygosity and consequent negative values of the estimated inbreeding coefficient.

The false positives rate (FPR) clearly increases with V_k . With $V_k=2$, FPR for the M-ratio_{ft} test is either 1% or 0% (indicating probably that this criteria is too conservative) and it varies between 2% and 9% using the M-ratio_{sim} test. For the heterozygosity excess test, the FPR with $V_k=2$ is around the nominal 5% or less, and varies between 0% and 14% for the MSVAR analysis (this analysis being more permissive with large values of genetic variation). Very different results are obtained for $V_k > 2$ (Table 1 and Figure 2), especially for N_e equal or larger than 500 (i.e., when level of polymorphisms is not too low). All or almost all replicates analysed with the M-ratio_{sim} test or with the MSVAR analysis support a bottleneck when $V_k \geq 400$ and $N_e \geq 500$. When the more conservative M-ratio_{ft} test or the heterozygosity excess test are applied, the FPR decreases, but never below

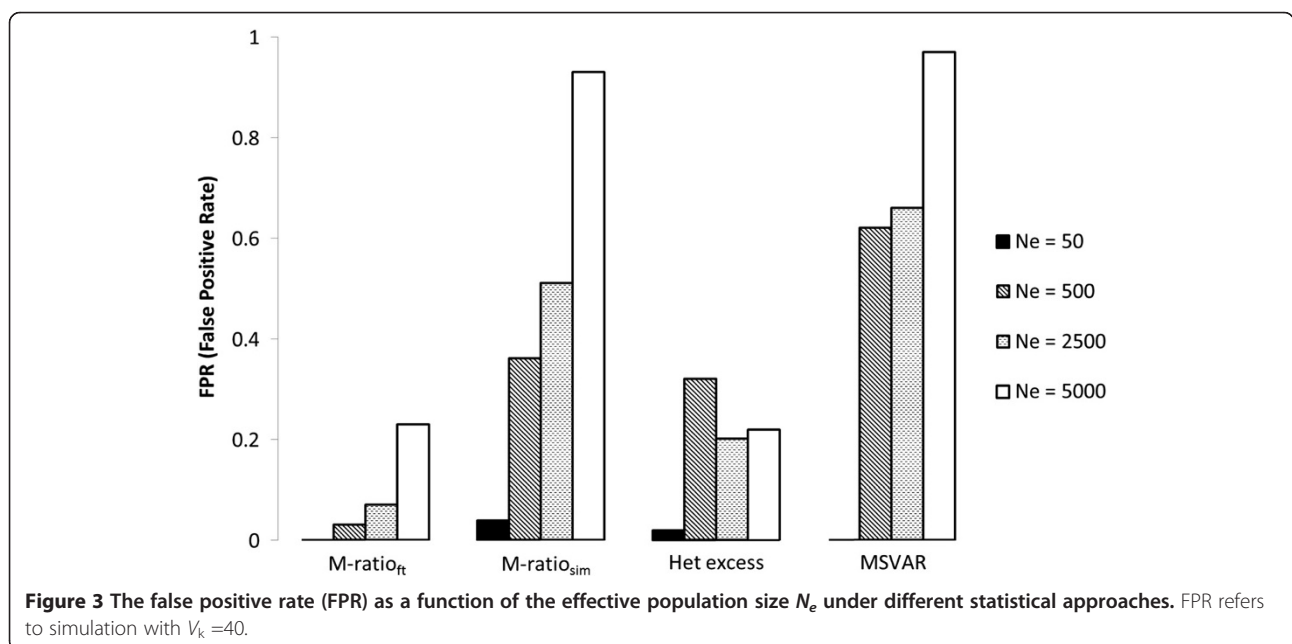


21%. For $V_k=40$, i.e., when the ratio between effective and census size is equal to 0.1, FPR can reach values as high as 93% or 97% in the M-ratio_{sim} test and the MSVAR analysis, respectively. Furthermore, we observe a general trend of FPR to increase with N_e (Table 1 and Figure 3). This pattern, likely related to the overall level of genetic variation available for the tests and to the ratio between the sample size and N_e (which is decreasing when N_e increases), deserves further investigation. In summary, with high variation in reproductive variance, the M-ratio and heterozygosity excess tests produce many false positives, and the probability to detect a spurious bottleneck signal tends to increase with increasing effective population size.

MSVAR results are in general similar to those obtained with the M-ratio_{sim} test.

Additional simulations

Constrained allelic size – Simulations with $N_e=500$ and $V_k=2$ or 400. When microsatellite alleles exhibit strong size restrictions (only 5 alleles with adjacent number of repeats are possible), the fraction of false positives for the heterozygote excess test increased from 1% to 47% when V_k was increased from 2 to 400. This increase in FPR is similar to that observed in the simulations with size-unconstrained loci. However, none of the replicates with high V_k with constrained loci produced small and



significant M-ratios. The likely explanation is that a reduced allelic range prevents the opening of gaps in the allelic size distribution. In other words, the M-ratio test does not tend to suggest a false signal of a bottleneck when analyzing size-constrained EST microsatellites.

DNA sequence polymorphism - Simulations with $N_e = 500$ and $V_k = 400$. The Tajima's D distribution, centered around 0 for $V_k = 2$ in case of constant population size and absence of natural selection, is shifted towards positive values, with a mean of 1.24. The FPR, i.e. the fraction of values significantly larger than 0, is 37%. Thus, the Tajima's D statistics is similarly affected by an increased variance in reproductive success, and would frequently support a population decline or balancing selection when $V_k \gg 2$.

Discussion

In many organisms with high fecundity, the contribution of each individual or pair to the next generation can be highly skewed, with few "winners" (i.e. those who produce many offspring) and many "losers" who do not contribute to the gene pool of the next generation. Under this scenario of Sweepstakes Reproductive Success (SRS) [38], the variance in reproductive success (V_k) is larger than assumed by the Wright-Fisher model. Population genetics theory predicts that the ratio of N_e (the effective population size) over N_c (the census population size) rapidly decreases from one as V_k increases. The SRS model is thus considered a likely explanation for the empirical observation that many marine organisms have much lower genetic variation (and therefore N_e) than predicted by their very large N_c [39].

While the negative relationship between genetic variation and V_k is well known, the effect of V_k on the gene genealogy shape reconstructed from a sample of DNA fragments is yet unclear. It is possible that large V_k values may introduce distortions in this genealogy, in turn distorting the relationships between genetic variation measures. This is relevant as many statistical analyses for identifying deviations from neutrality and demographic stability assume $V_k=2$ and are based on the relationships between genetic variation measures.

We addressed this question by comparing simulated datasets of single populations with different V_k values. Specifically we estimated the impact of large V_k on the results from four statistical tests commonly used to detect population size variation: the M-ratio test, the heterozygote excess test, a test derived from a Bayesian estimate of ancient and current population sizes, and the Tajima's D test. Conceptually, when these tests are applied to neutral markers, the null hypothesis includes demographic stability, no migration and $V_k=2$. Rejection of this hypothesis may be interpreted as population decline, but may be also due to large V_k in isolated, demographically stable populations. This is relevant in conservation

genetics as violation of the assumption of low V_k made by these tests can produce incorrect inference, and may suggest incorrect management interventions.

Our simulations show that high V_k can strongly increase the rate of false positives (FPR = type I error = incorrect inference of population decline) for all the tests. Further, the larger V_k , the larger the rate. FPR is also dependent, to some extent, on N_e (and thus the level of genetic variation), but this relationship appears test-specific. Based on our results, it appears that the MSVAR method is most prone to errors, followed by the M-ratio with the critical threshold computed by simulations (M-ratio_{sim}). The heterozygote excess and M-ratio with the traditional threshold are less prone to false positives when V_k is large and may be preferred for use, if the goal is to reduce type I errors when evidence of large V_k is available. The results we obtained show also that high V_k could cause wrong conclusions when the aim of the analysis is to identify signatures of selection. In particular, the negative F_{is} values and positive Tajima's D produced in our simulations of neutral markers with large V_k could be misinterpreted as signals of balancing selection.

When V_k is large, a large fraction of siblings is observed every generation. In coalescent terms, several lineages merge in one generation going back in time, producing many short external branches in the gene genealogy and therefore a deviation from the standard Kingman coalescent [27,28]. Allele sharing among individuals will be high and alleles present in one (singletons) or few (rare alleles) individuals will be very low. Considering that bottleneck tests assume the standard Kingman coalescent, or the Wright-Fisher model it approximates, we propose that the excess of short external branches and corresponding deficit of rare alleles could explain the large FPR. In fact, this situation is expected to result in (a) higher heterozygosity than expected based on number of alleles (and thus positive heterozygote excess test and an overall signal of population decline detected by MSVAR), (b) gaps in the microsatellite allele size distribution (and significant M-ratio test) and (c) loss of segregating sites but not substantial reduction in the average pairwise difference (and positive Tajima's D). We also note that the fraction of siblings and the rate of multiple coalescent events rapidly decreases going back in time (since few lineages survive, additional simulation results not shown); thus, one generation of large V_k can generate large FPR. We also note that the constant population size scenario we simulated appears similar, in its effects, to a scenario of a recent and extreme bottleneck in an additional way, with a small recent effective size producing negative F_{is} values compatible with a population of few individuals [40].

Due to different parameterization of the model of the biological system, our results are not directly comparable with the genetic prediction of recent theoretical models

of populations with skewed offspring number and overlapping generations [27,41-45]. These models, which allow for simultaneous multiple coalescent events e.g. [42], suggest that in a “many losers, few winners” situation (high V_k), the chances to obtain star-like genealogies and excess of rare alleles, i.e., signatures of population expansion, is increased compared to the $V_k = 2$ case; this is opposite the result obtained in our study. A possible explanation for the discrepancy is the fact that our simulations considered non-overlapping generations, and overlap in generations may provide a buffer against the effects of drift and consequent high allele sharing caused by high V_k . Additional efforts should be dedicated to make the results produced by theoretical models with multiple merger and those obtained in our study comparable.

Practical applications

Certainly, our results suggest that the genetic signature of a bottleneck should be interpreted with caution when found in species known to have moderate to large variance in offspring number (as for example in the killer whale, [46]), or where large variance in offspring number is suspected (as for example in many marine species, [26]). In the killer whale example, large variance in offspring number was estimated based on parentage analysis and a demographic bottleneck was inferred from genetic data using the statistical approaches we examined in our study; the authors report that it is unclear whether a bottleneck actually occurred. This work, and our simulations, emphasize that robust, widely applicable, powerful alternative methods of detect a bottleneck are still needed.

An alternative to using the standard bottleneck tests for species with large V_k is using computer simulations [16,32]. Summary statistics from observed data can be compared to a distribution of expected values from simulated data created with forward simulations, in *simuPOP*, *spip* [47], *Nemo* [48], *cdpop* [49] or other software [32]. The distribution of reproductive success and other aspects of the species' reproductive system can be taken into account in the simulations, allowing the investigator to observe V_k effects on the population genetic signal and, more specifically, generating species-specific null distributions of the bottleneck tests (as the M-ratio statistic) more appropriate for V_k larger than 2. Simulating stable populations, and populations with different intensities of demographic decline, can allow statistical comparison to the observed data (with or without formal approaches like Approximate Bayesian Computation, [50]).

The high FPR we uncover may not present a problem for studies that detect a bottleneck by comparing temporal samples, as comparing a modern sample to museum or ancient samples [23], or comparing to a non-bottlenecked but otherwise similar population [17]. Type I error due to V_k should not be expected to arise because large V_k should affect

diversity in both samples. However, this assumes that V_k is constant through time. If census size decreases, V_k may change through time [12], with unknown effects on our ability to detect a bottleneck by comparing ancient and modern genetic variation levels. The increasing use of ancient DNA and prevalence of studies that infer bottlenecks from temporal samples [51], suggests that it will be important to evaluate the effects of high V_k on temporal comparisons.

Finally, considering that our simulations assumed non-overlapping generations, and also considering that effect of drift decreases proportionally to the number of generations that overlap [25,52], we emphasize that our findings should be considered applicable particularly to organisms with non-overlapping generations or short generation times (e.g., annual plants, insects, some fish).

Conclusions

We have shown that high reproductive variance increases the rate of false positives in four widely used bottleneck detection tests. Failing to detect a genuine bottleneck is widely acknowledged as harmful in conservation. However, given the limited resources and myriad of necessary conservation actions that are required to protect vulnerable species and populations [53], accurate tests are required to identify population bottlenecks with low false positive rates so that resources can be applied where they are needed most. The current study highlights the high type I error rate of bottleneck tests and emphasizes the need for more sophisticated analysis to evaluate conservation status of species with high reproductive variance.

Competing interests

The authors declare no competing interests.

Authors' contributions

MM, CVO, and GB conceived and designed the study, MM and AB performed simulations and data analysis, SH drafted the manuscript and GB and OEG worked on it. All authors examined data, discussed results, contributed to manuscript revision and approved the final draft.

Authors' information

All authors are interested in the demographic and genetic dynamics of small or isolated populations, and in the development and testing of statistical approaches to infer population processes from genetic variation data.

Acknowledgements

Funding was provided by the University of Ferrara, Italy. CvO was funded by the Earth and Life Systems Alliance (ELSA), Norwich Research Park, UK. We thank Lorenzo Zane and Richard Nichols for helpful discussions. GB thanks Camila Mazzoni and Simone Sommer for their hospitality at the Berlin Center for Genomics in Biodiversity Research during the revision of this paper.

Author details

¹Department of Life Sciences and Biotechnology, University of Ferrara, via Borsari 46, Ferrara I-44121, Italy. ²National Institute for Mathematical and Biological Synthesis (NIMBios), The University of Tennessee, Knoxville, TN 37996, USA. ³Institute for Maternal and Child Health, IRCCS, University of Trieste, via dell'Istria 65, Trieste I-34137, Italy. ⁴School of Biology, Scottish Oceans Institute, University of St Andrews, St Andrews, Fife KY16 8LB, UK. ⁵School of Environmental Sciences, University of East Anglia, Norwich Research Park, Norwich NR4 7TJ, UK.

Received: 8 May 2013 Accepted: 9 October 2013
Published: 16 October 2013

References

1. Bryant EH, Meffert LM: An analysis of selectional response in relation to a population bottleneck. *Evolution* 1995, **49**:626–634.
2. Kirkpatrick M, Jarne P: The effects of a bottleneck on inbreeding depression and the genetic load. *Am Nat* 2000, **155**:154–167.
3. Van Oosterhout C, Smith AM, Hänfling B, Ramnarine IW, Mohammed RS, Cable J: The guppy as a conservation model: implications of parasitism and inbreeding for reintroduction success. *Conserv Biol* 2007, **21**:1573–1583.
4. Swatdipong A, Primmer C, Vasemägi A: Historical and recent genetic bottlenecks in european grayling, thymallus thymallus. *Conserv Genet* 2010, **11**:279–292.
5. Nei M, Maruyama T, Chakraborty R: The bottleneck effect and genetic variability in populations. *Evolution* 1975, **29**:1–10.
6. Maruyama T, Fuerst PA: Population bottlenecks and nonequilibrium models in population genetics. II. Number of alleles in a small population that was formed by a recent bottleneck. *Evolution* 1985, **111**:675–689.
7. Beaumont M a: Detecting population expansion and decline using microsatellites. *Genetics* 1999, **153**:2013–2029.
8. Luikart G, Allendorf FW, Cornuet JM, Sherwin WB: Distortion of allele frequency distributions provides a test for recent population bottlenecks. *J Hered* 1998, **89**:238–247.
9. Cornuet JM, Luikart G: Description and power analysis of two tests for detecting recent population bottlenecks from allele frequency data. *Genetics* 1996, **144**:2001–2014.
10. Garza JC, Williamson EG: Detection of reduction in population size using data from microsatellite loci. *Mol Ecol* 2001, **10**:305–318.
11. Girod C, Vitalis R, Leblois R, Freville H: Inferring population decline and expansion from microsatellite data: a simulation-based evaluation of the msvar method. *Genetics* 2011, **188**:165–179.
12. Hoelzel AR: Impact of population bottlenecks on genetic variation and the importance of life-history; a case study of the northern elephant seal. *Biol J Linn Soc* 1999, **68**:23–39.
13. Brekke P, Bennett PM, Santure AW, Ewen JG: High genetic diversity in the remnant island population of hihi and the genetic consequences of re-introduction. *Mol Ecol* 2011, **20**:29–45.
14. Hailer F, Helander B, Folkestad AO, Ganusevich S a, Garstad S, Hauff P, Koren C, Nygård T, Volke V, Vilà C, Ellegren H: Bottlenecked but long-lived: high genetic diversity retained in white-tailed eagles upon recovery from population decline. *Biol Lett* 2006, **2**:316–319.
15. Pastor T, Garza JC, Allen P, Amos W, Aguilar A: Low genetic variability in the highly endangered mediterranean monk seal. *J Hered* 2004, **95**:291–300.
16. Hoban SM, Gaggiotti OE, Bertorelle G: The number of markers and samples needed for detecting bottlenecks under realistic scenarios, with and without recovery: a simulation-based study. *Mol Ecol* 2013, **22**:3444–3450.
17. Hundermark KJ, Daele Van LJ: Founder effect and bottleneck signatures in an introduced, insular population of elk. *Conserv Genet* 2010, **11**:139–147.
18. Peery MZ, Kirby R, Reid BN, Stoelting R, Doucet-Ber E, Robinson S, Vasquez-Carrillo C, Pauli JN, Palsboll PJ: Reliability of genetic bottleneck tests for detecting recent population declines. *Mol Ecol* 2012, **21**:3403–3418.
19. Luikart G: Empirical evaluation of a test for identifying recently bottlenecked populations from allele frequency data. *Conserv Biol* 1998, **12**:228–237.
20. Hoban SM, Borkowski DS, Brosi SL, McCleary TS, Thompson LM, McLachlan JS, Pereira MA, Schlarbaum SE, Romero-Severson J: Range-wide distribution of genetic diversity in the north american tree juglans cinerea: a product of range shifts, not ecological marginality or recent population decline. *Mol Ecol* 2010, **19**:4876–4891.
21. Williamson-Natesan E: Comparison of methods for detecting bottlenecks from microsatellite loci. *Conserv Genet* 2005, **6**:551–562.
22. Hoban SM, Gaggiotti OE, Bertorelle G, ConGRESS: Sample planning optimization tool for conservation and population genetics (SPOTG): a software for choosing the appropriate number of markers and samples. *Methods Ecol Evol* 2013, **4**:299–303.
23. Guinand B, Scribner KT: Evaluation of methodology for detection of genetic bottlenecks: inferences from temporally replicated lake trout populations. *C R Biol* 2003, **326**:61–67.
24. Araki H, Waples RS, Ardren WR, Cooper B, Blouin MS: Effective population size of steelhead trout: influence of variance in reproductive success, hatchery programs, and genetic compensation between life-history forms. *Mol Ecol* 2007, **16**:953–966.
25. Hedrick P: Large variance in reproductive success and the Ne/N ratio. *Evolution* 2005, **59**:1596–1599.
26. Hedgecock D, Pudovkin AI: Sweepstakes reproductive success in highly fecund marine fish and shellfish: a review and commentary. *Bull Mar Sci* 2011, **87**:971–1002.
27. Eldon B, Wakeley J: Coalescent processes when the distribution of offspring number among individuals is highly skewed. *Genetics* 2006, **172**:2621–2633.
28. Sjödin P, Kaj I, Krone S, Lascoux M, Nordborg M: On the meaning and existence of an effective population size. *Genetics* 2005, **169**:1061–1070.
29. Hill WG: A note on effective population size with overlapping generations. *Genetics* 1979, **92**:317–322.
30. Tajima F: Statistical method for testing the neutral mutation hypothesis by DNA polymorphism. *Genetics* 1989, **123**:585–595.
31. Peng B, Kimmel M: SimuPOP: a forward-time population genetics simulation environment. *Bioinformatics* 2005, **21**:3686–3687.
32. Hoban S, Bertorelle G, Gaggiotti OE: Computer simulations: tools for population and evolutionary genetics. *Nat Rev Genet* 2012, **13**:110–122.
33. Wright S: The distribution of gene frequencies under irreversible mutation. *PNAS* 1938, **24**:253–259.
34. Excoffier L, Lischer HEL: Arlequin suite ver 3.5: a new series of programs to perform population genetics analyses under linux and windows. *Mol Ecol Resour* 2010, **10**:564–567.
35. Piry S, Luikart G, Cornuet J-M: Computer note. BOTTLENECK: a computer program for detecting recent reductions in the effective size using allele frequency data. *J Hered* 1999, **90**:502–503.
36. Kimura M, Ota T, Ohta T: Distribution of allelic frequencies in a finite population under stepwise production of neutral alleles. *Proc Natl Acad Sci U S A* 1975, **72**:2761–2764.
37. Estoup A, Angers B: Microsatellites and minisatellites for molecular ecology: theoretical and empirical considerations. In *Advances in molecular ecology*. Edited by Carvalho GR. Amsterdam: IOS Press; 1998:55–86.
38. Hedgecock D: Does variance in reproductive success limit effective population size of marine organisms? In *Genetics and evolution of aquatic organisms*. Edited by Beaumont A. London: Chapman and Hall; 1994:122–134.
39. Gaggiotti OE, Vetter R: Effect of life history strategy, environmental variability, and overexploitation on the genetic diversity of pelagic fish populations. *Can J Fish Aquat Sci* 1999, **56**:1376–1388.
40. Wang J: Estimation of effective population sizes from data on genetic markers. *Philos Trans R Soc B: Biol Sci* 2005, **360**:1395–1409.
41. Eldon B: Structured coalescent processes from a modified moran model with large offspring numbers. *Theor Popul Biol* 2009, **76**:92–104.
42. Sargsyan O, Wakeley J: A coalescent process with simultaneous multiple mergers for approximating the gene genealogies of many marine organisms. *Theor Popul Biol* 2008, **74**:104–114.
43. Eldon B: Estimation of parameters in large offspring number models and ratios of coalescence times. *Theor Popul Biol* 2011, **80**:16–28.
44. Möhle M, Sagitov S: A classification of coalescent processes for haploid exchangeable population models. *Ann Probab* 2001, **29**:1547–1562.
45. Beckenbach AT: Mitochondrial haplotype frequencies in oysters: neutral alternatives to selection models. In *Non neutral evolution: theories and molecular data*. Edited by Golding B. New York: Chapman and Hall; 1994:187–198.
46. Ford MJ, Hanson MB, Hempelmann J a, Ayres KL, Emmons CK, Schorr GS, Baird RW, Balcomb KC, Wasser SK, Parsons KM, Balcomb-Bartok K: Inferred paternity and male reproductive success in a killer whale (orcinus orca) population. *J Hered* 2011, **102**:537–553.
47. Anderson EC, Dunham KK: Spip 1.0: a program for simulating pedigrees and genetic data in age-structured populations. *Mol Ecol Notes* 2005, **5**:459–461.
48. Guillaume F, Rougemont J: Nemo: an evolutionary and population genetics programming framework. *Bioinformatics* 2006, **22**:2556–2557.
49. Landguth EL, Cushman SA: Cdpop: a spatially explicit cost distance population genetics program. *Mol Ecol Resour* 2010, **10**:156–161.
50. Bertorelle G, Benazzo A, Mona S: ABC as a flexible framework to estimate demography over space and time: some cons, many pros. *Mol Ecol* 2010, **19**:2609–2625.

51. Navascués M, Depaulis F, Emerson BC: **Combining contemporary and ancient DNA in population genetic and phylogeographical studies.** *Mol Ecol Resour* 2010, **10**:760–772.
52. Tallmon DA, Gregovich D, Waples RS, Baker CS, Jackson J, Taylor BL, Archer E, Martien KK, Allendorf FW, Schwartz MK, Scott Baker C: **When are genetic methods useful for estimating contemporary abundance and detecting population trends?** *Mol Ecol Resour* 2010, **10**:684–692.
53. Pertoldi C, Bijlsma R, Loeschcke V: **Conservation genetics in a globally changing environment: present problems, paradoxes and future challenges.** *Biodivers Conserv* 2007, **16**:4147–4163.

doi:10.1186/1471-2105-14-309

Cite this article as: Hoban *et al.*: High variance in reproductive success generates a false signature of a genetic bottleneck in populations of constant size: a simulation study. *BMC Bioinformatics* 2013 **14**:309.

**Submit your next manuscript to BioMed Central
and take full advantage of:**

- Convenient online submission
- Thorough peer review
- No space constraints or color figure charges
- Immediate publication on acceptance
- Inclusion in PubMed, CAS, Scopus and Google Scholar
- Research which is freely available for redistribution

Submit your manuscript at
www.biomedcentral.com/submit

