

Software

Open Access

## WebArray: an online platform for microarray data analysis

Xiaoqin Xia<sup>1</sup>, Michael McClelland<sup>1,2</sup> and Yipeng Wang<sup>\*2</sup>

Address: <sup>1</sup>Genomic Core Facility, Sidney Kimmel Cancer Center, San Diego, CA 92121, USA and <sup>2</sup>Department of Cancer Genetics, Sidney Kimmel Cancer Center, San Diego, CA 92121, USA

Email: Xiaoqin Xia - [xxia@skcc.org](mailto:xxia@skcc.org); Michael McClelland - [mcclelland.michael@gmail.com](mailto:mcclelland.michael@gmail.com); Yipeng Wang\* - [ywang@skcc.org](mailto:ywang@skcc.org)

\* Corresponding author

Published: 21 December 2005

Received: 24 September 2005

BMC Bioinformatics 2005, 6:306 doi:10.1186/1471-2105-6-306

Accepted: 21 December 2005

This article is available from: <http://www.biomedcentral.com/1471-2105/6/306>

© 2005 Xia et al; licensee BioMed Central Ltd.

This is an Open Access article distributed under the terms of the Creative Commons Attribution License (<http://creativecommons.org/licenses/by/2.0>), which permits unrestricted use, distribution, and reproduction in any medium, provided the original work is properly cited.

### Abstract

**Background:** Many cutting-edge microarray analysis tools and algorithms, including commonly used limma and affy packages in Bioconductor, need sophisticated knowledge of mathematics, statistics and computer skills for implementation. Commercially available software can provide a user-friendly interface at considerable cost. To facilitate the use of these tools for microarray data analysis on an open platform we developed an online microarray data analysis platform, WebArray, for bench biologists to utilize these tools to explore data from single/dual color microarray experiments.

**Results:** The currently implemented functions were based on limma and affy package from Bioconductor, the spacings LOESS histogram (SPLOSH) method, PCA-assisted normalization method and genome mapping method. WebArray incorporates these packages and provides a user-friendly interface for accessing a wide range of key functions of limma and others, such as spot quality weight, background correction, graphical plotting, normalization, linear modeling, empirical bayes statistical analysis, false discovery rate (FDR) estimation, chromosomal mapping for genome comparison.

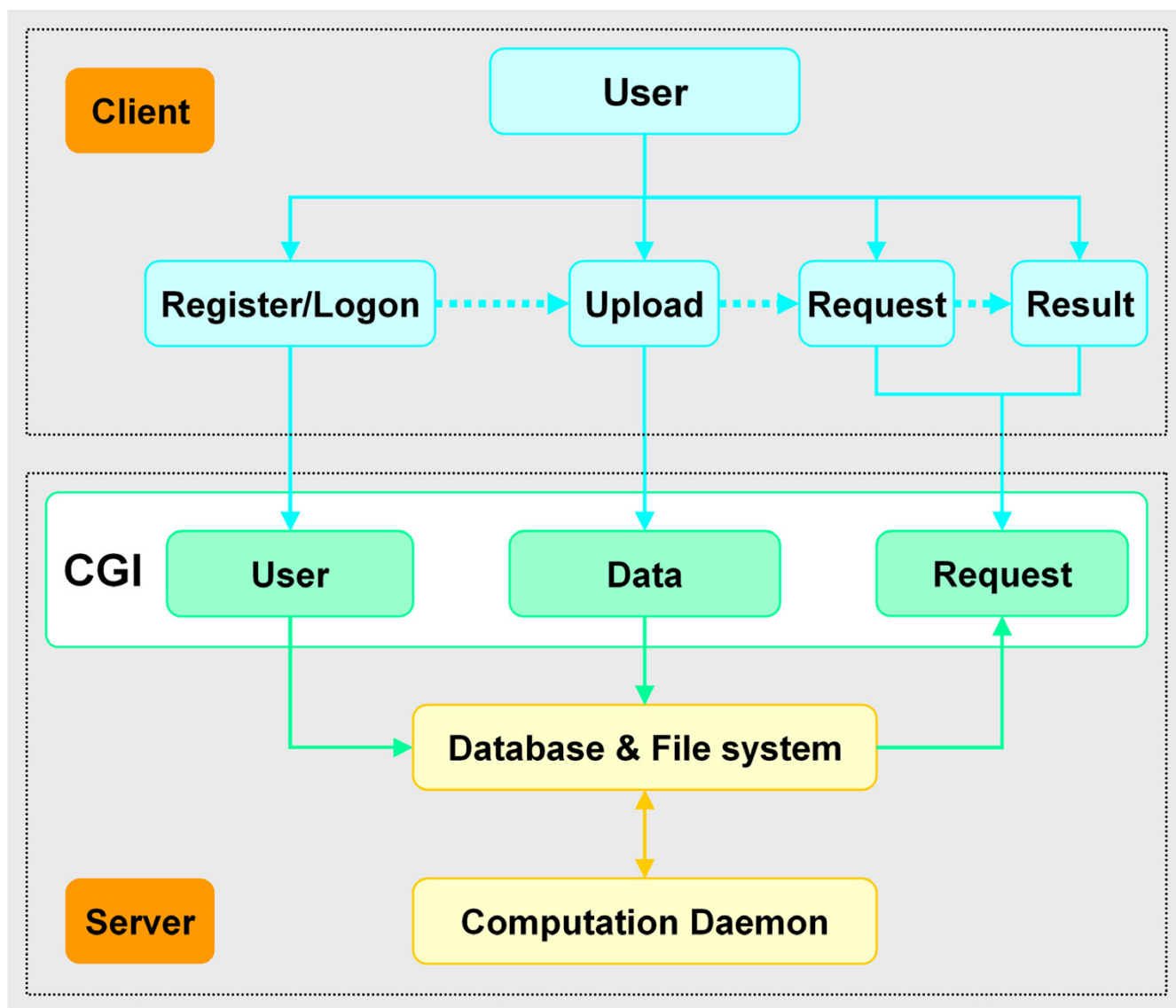
**Conclusion:** WebArray offers a convenient platform for bench biologists to access several cutting-edge microarray data analysis tools. The website is freely available at <http://bioinformatics.skcc.org/webarray/>. It runs on a Linux server with Apache and MySQL.

### Background

Microarray techniques are being used more and more widely, and many models and algorithms have been developed for microarray data analysis. However, in many cases, people need to have a sufficient knowledge of mathematics, statistics and computer skills in order to utilize these methods. A perfect example is Bioconductor [1]. As a leading open source project on genomic data analysis, Bioconductor gathered a wide range of packages available for the analysis of microarray data. However, command line interface programming skills are essential for using

Bioconductor and R computer language, which could be an impediment to many biologists. To bridge the gap between biologist's real world problems and the best microarray data analysis methods, we developed WebArray to assist biologists with using tools for microarray data analysis, including some packages from Bioconductor and others.

limma (Linear Models for Microarray Analysis) is one of the most commonly used packages in Bioconductor, which has incorporated the most cutting-edge statistical

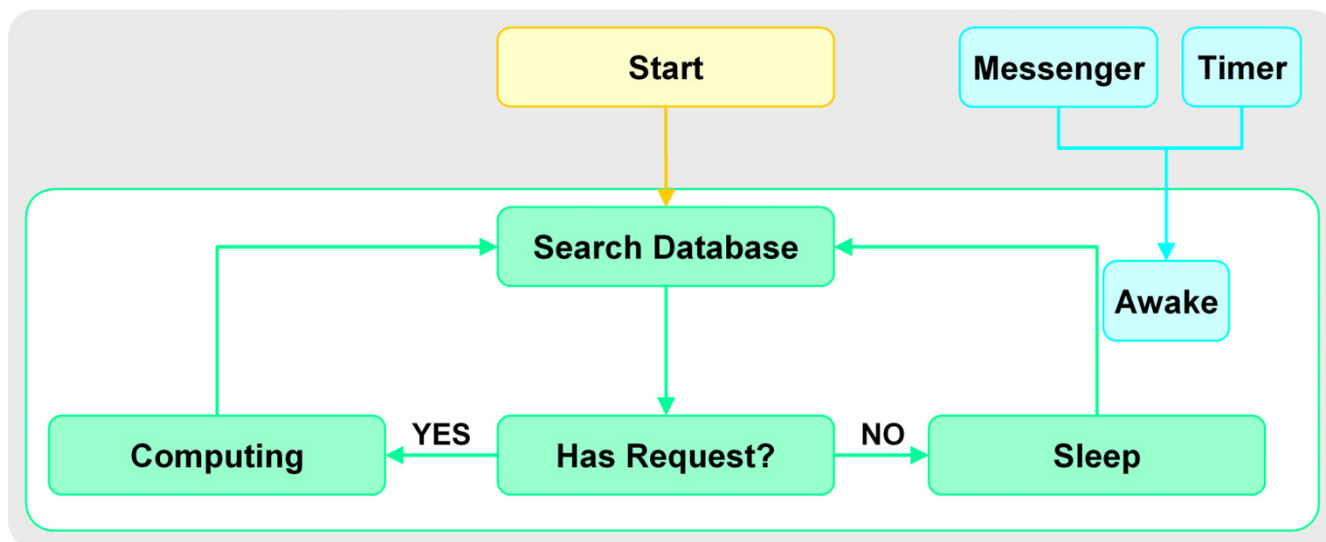


**Figure 1**  
WebArray client-server architecture.

analysis methods, providing normalization and statistical analysis for cDNA microarray. The key function of the limma package is an implementation of the empirical Bayes linear modeling approach of Smyth [2]. Affy, another commonly used package from Bioconductor, is used for reading Affymetrix GeneChip CEL file, followed by background correction, normalization, probe specific background correction and summarizing the probe set values into one expression measure. Users also have the options of obtaining expression values that correspond to those from the robust multi-array average (RMA) method [3], MAS 5.0 or Li and Wong's MBEI (dchip) [4].

In the context of testing thousands of genes, the false discovery rate (FDR) may be a better way to specify the confidence of microarray. A separate package, spacings LOESS histogram (SPLOSH), which estimates the conditional FDR (cFDR), the expected proportion of false positives conditioned on having k 'significant' findings, has been incorporated into WebArray for further estimating the occurrence of false positives, false negatives and the FDR [5].

Chromosome location mapping is not only important in comparative genome hybridization (CGH), but some-



**Figure 2**  
Control logic for WebArray job scheduler.

times also in gene expression and methylation analysis [6]. Chromosome location mapping is processed as follows. Microarray data (log2 ratio between two hybridized genomes) are sorted based on their chromosome location. A quadratic loess curve, which can be viewed as a locally weighted polynomial regression curve through each data set, is constructed. The regions in which contiguous segments of the loess curve were consistently greater than (or less than) a user-defined value times standard deviations away from the mean of the all the data points is identified, and the Mann-Whitney U test is used to determine whether each selected region differed significantly from the set of data points from regions that had not been selected for examination by this test [6].

**Implementation**

WebArray runs on a LAMP system (Linux + Apache + MySQL + Python) system. Python was setup with packages: Numeric Python, Rpy, Karrigell and pycrypto. Background computations are mostly done by R scripts. The source code is distributed under the GNU General Public License and is freely available for non-profit use via a request to the authors.

On WebArray server, python CGI scripts deal with communication between users and the server. As shown in Figure 1, the functions of these scripts fall into three categories: 1) user management, including user registration and signing; 2) data management, including uploading data and maintenance; 3) Requests management, i.e., accepting/deleting requests and browsing results. User information, data files, submitted jobs and results are

stored in database and server file system. A scheduler program deals with request jobs.

The scheduler maintains a searching-dealing loop, its scheduling logic is shown in Figure 2. Once launched, this program will check new jobs in the database. New jobs are delivered in turn to the corresponding R script for computing. In case of no new job found, the scheduler will go to sleep. After a request is submitted to the database, CGI will send a message to invoke the scheduler and restart its work cycle. A timer is also set to awake the scheduler regularly, this can make sure that the system will work even if errors occur in communication with CGI.

On the client end, users logically follow a four-step course: register/logon, upload data, submit requests and browse results (see Figure 1). JavaScript is used to enhance the user interface.

**Results and discussion**

Microarray analysis using WebArray can be executed in three steps: 1) uploading and managing files; 2) selecting datasets and methods for analysis; 3) browsing results. Partial web page for dual color array data analysis is shown in Figure 3. A help document is available online with detailed annotation of all functions of WebArray.

As the first step for analysis, users need to upload their microarray intensity files, gene list file and others. The files will be deleted from the server six months after submitting. Users can view and manually delete these files, as well. WebArray requires the following files for analysis; 1)



# WEBARRAY

- [Home](#)
- [User Profile](#)
- [Upload Data](#)
- [Manage Data](#)
- [Submit Requests](#)
- [Affymetrix Data](#)
- [Dual Color Array Data](#)
- [Browse Results](#)
- [Help](#)
- [Logoff](#)

## 2 Parameters for Analysis

### Number of replicates within array is

### Background Substraction:

- edwards  
  half  
  minimum  
  movingmin  
  none  
  normexp  
  subtract

### Spot Quality Weight (optional):

- GenePix output   
  none  
  QuantArray output  
  SPOT output

### Within-Array Normalization:

- Composite loess with [control gene list](#)   
  Global Loess  
  Print-tip Loess  
 Median  
  None  
  Robust Spline

### Between-Array Normalization:

- Aquantile  
  Gquantile  
  None  
  Quantile  
  Rquantile  
  Scale  
 PCA with significance level () and average number () of genes in each vector  
  vsn

### Microarray Data Analysis:

- Linear Model Statistical Analysis (including FDR calculation with SPLOSH)  
 Normalize data only

### CGH analysis (optional):

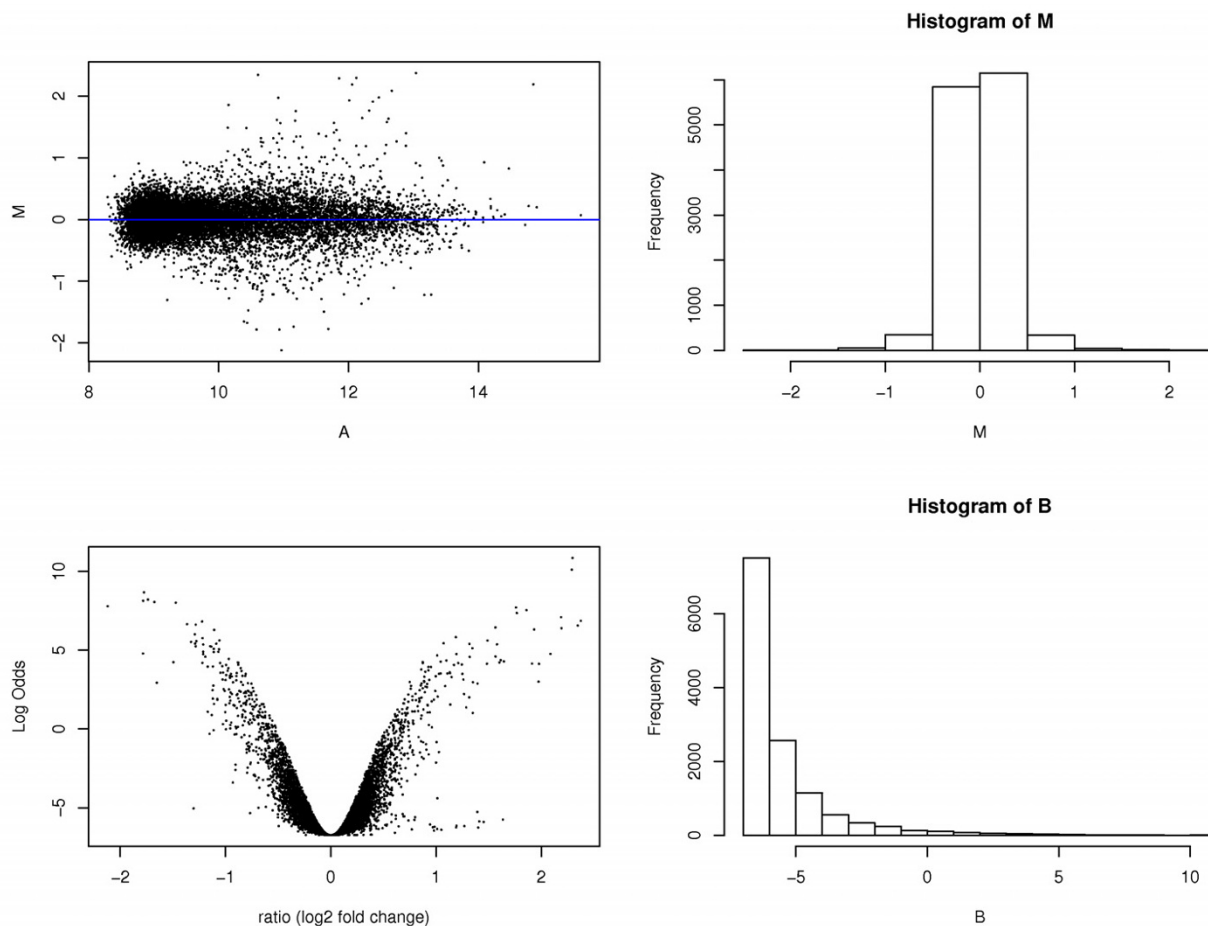
- Genome type:  human  
  mouse  
  rat  
  single chromosome  
 multichromosome with the number
- span:   
 threshold 1:   
 threshold 2:

**Figure 3**  
Snapshot of WebArray web page for dual color array data analysis.

Intensity files. Text files exported by a variety of image analysis programs such as Affymetrix, Agilent, ArrayVision, Genepix, ImaGene, QuantArray, SMD and SPOT. Files exported from other programs have to be uploaded in a specified format; 2) Targets file. A tab-delimited text file listing the targets hybridized to each channel of each array; 3) Gene list file, such as gene allocation list (GAL) file. A specified format is acceptable too; 4) Design file. A tab-delimited text file containing design matrix for linear model; 5) Spot type file (STF). STF is used to distinguish different types of spots from the gene list using regular expression, including control spots, positive and negative controls; 6) Genome/chromosome location file. A tab-delimited text file containing array spots sorted by genome/chromosome location information; 7) control

genes file. A text file containing housekeeping gene's printing order index for composite normalization. Intensity files are required for all analysis, a gene list file is required for dual color array data analysis and all other files are optional.

In the "submit requests" page, users can select data for analysis from their own uploaded files. WebArray includes most of the functions limma provided, such as spot quality weight, background subtraction, normalization and empirical Bayes statistical analysis. In addition, principal component analysis assisted normalization method is incorporated [7], FDR can be estimated using SPLOSH, and chromosomal mapping will be plotted if desired.



**Figure 4**  
**Statistical analysis result plot.** Result plot includes M-A plot, M-B plot, M histogram and B statistics histogram. M: the log-differential expression ratio. A: the log-intensity of the spot, a measure of overall brightness of the spot. B: B statistics, the log-odds of differential expression.

The limma package uses linear models to analyze designed microarray experiments. For Affymetrix array data and simple dual color experiments, such as two-sample comparison with switching dye or two-sample comparison with common reference, users can specify the design just by selecting sample types in the columns corresponding to each microarray intensity file. For multi-sample comparisons or complicated experiment design, users need more statistical knowledge for the creation of design matrix and contrast matrix.

WebArray allows the user to name a request, otherwise a name will be assigned automatically. Submitted requests will be put on a waiting list. The page for results allows users to browse their own list of requests. Requests can be edited or removed. Since computation with microarray

data usually involves huge data sets, it may take a few minutes to complete a computation. For data sets with within-array duplicates the process will take much longer time, maybe hours.

The output files include tab-delimited text files and graphic plots that can be downloaded separately or viewed online. All the files are archived in one ZIP file and are available for download as well. Based on the options of analysis, the text file may contain the gene information, M (log2 ratio), moderated t and its corresponding p-value, B statistics, FDR, FP (false positive), FN (false negative) and CGH fitted value. The table of genes can be either unranked or ranked by M, p value or B statistics. Graphic plots include array image plots, density plots, histogram, RNA degradation plot, M-A plot for each array

(before and after within-array normalization), printtloess plot for each array, box plot (before and after between-array normalization), chromosomal location mapping plots where M is plotted against chromosomal location and results plot that includes M-A plot, M-B plot, M histogram and B statistics histogram (see Figure 4).

While more sophisticated programs are available commercially, WebArray represents an excellent free open source software for microarray analysis that can be used by an average biologist after moderate training. To help biologists to understand the underlying statistics methods, we provide detailed explanations and references for most WebArray functions in the help document.

### Availability and requirements

- Project name: WebArray
- Project home page: <http://bioinformatics.skcc.org/webarray/>
- Operating system(s): Platform independent (web-service)
- Programming language: Python, R.
- Other requirements: Internet browser, such as IE, Netscape or Firefox, with cookie and JavaScript support enabled. For the purpose of data management and security, users need to register an ID and password on WebArray prior to use.
- License: under the GNU General Public License [8] for download.

### Authors' contributions

XX performed software engineering, coding and debugging. MM was involved in the guidance of this project. YW designed the website and wrote the R code. All authors read and approved the final version of the manuscript.

### Acknowledgements

We would like to thank Fred Long for maintaining the web server, Carlos Santiviago for helpful discussion and feedback on WebArray. This project was funded in part by grants DAMD17-03-1-0022, R01AI034829, R21AI054829, and R01CA68822 to MM.

### References

1. **Bioconductor** [<http://www.bioconductor.org>]
2. Smyth GK: **Linear Models and Empirical Bayes Methods for Assessing Differential Expression in Microarray Experiments.** *Statistical Applications in Genetics and Molecular Biology* 2004, **3**:Article 3.
3. Irizarry RA, Hobbs B, Collin F, Beazer-Barclay YD, Antonellis KJ, Scherf U, Speed TP: **Exploration, normalization, and summarization of high density oligonucleotide array probe level data.** *Bioinformatics* 2003, **4**:249-264.
4. Li C, Wong WH: **Model-based analysis of oligonucleotide arrays: expression index computation and outlier detection.** *Proc Natl Acad Sci U S A* 2001, **98**:31-36.
5. Pounds S, Cheng C: **Improving false discovery rate estimation.** *Bioinformatics* 2004, **20**:1737-1745.
6. Wang Y, Yu QJ, Cho AH, Rondeau G, Welsh J, Adamson E, Mercola D, McClelland M: **Survey of differentially methylated promoters in prostate cancer cell lines.** *Neoplasia* 2005, **8**:748-760.
7. Stoyanova R, Querec TD, Brown TR, Patriotis C: **Normalization of single-channel DNA array data by principal component analysis.** *Bioinformatics* 2004, **20**:1772-1784.
8. **GNU GENERAL PUBLIC LICENSE** [<http://www.gnu.org/licenses/gpl.txt>]

Publish with **BioMed Central** and every scientist can read your work free of charge

"BioMed Central will be the most significant development for disseminating the results of biomedical research in our lifetime."

Sir Paul Nurse, Cancer Research UK

Your research papers will be:

- available free of charge to the entire biomedical community
- peer reviewed and published immediately upon acceptance
- cited in PubMed and archived on PubMed Central
- yours — you keep the copyright

Submit your manuscript here:  
[http://www.biomedcentral.com/info/publishing\\_adv.asp](http://www.biomedcentral.com/info/publishing_adv.asp)

